

# SPEC SHEET + MEASUREMENTS

PORT AUTHORITY.

Port Authority® Women's Concept Long Pocket Cardigan.  
LK5434

## Product photo



A versatile cardigan with ease of movement and a longer length, ideal for a busy life.

- 4.4-ounce, 62/33/5 poly/rayon/spandex jersey knit
- Open front
- Two patch pockets
- Hem vents

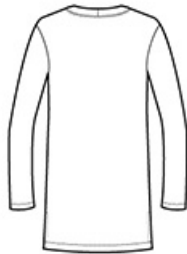
## CARE INSTRUCTIONS

Turn Inside Out. Machine Wash Cold On Gentle Cycle With Like Colors. Only Non-Chlorine Bleach, When Needed. Tumble Dry Low. Warm Iron, If Necessary.

## Sketches



front



back

# SPEC SHEET + MEASUREMENTS

PORT AUTHORITY

Port Authority® Women's Concept Long Pocket Cardigan.  
LK5434

## PRODUCT MEASUREMENTS

	XS	S	M	L	XL	XXL	3XL	4XL
Size	2	4/6	8/10	12/14	16/18	20/22	24/26	28/30
Body Length at Back	31 1/2	32	32 1/2	33	33 1/2	34	34 1/2	35
Bust	19	20	21	22 1/2	24	25 1/2	27 1/2	29 1/2
Sleeve Length	29 1/2	30	30 1/2	31 1/8	31 3/4	32 3/8	32 3/4	33 1/8

**Body Length at Back:** Measured from high point shoulder to finished hem at back.

**Bust:** Measured across the chest one inch below armhole when laid flat.

**Sleeve Length:** Start at center of neck and measure down shoulder, down sleeve to hem.

## SIZE CHARTS

	XS	S	M	L	XL	XXL	3XL	4XL
Size	2	4/6	8/10	12/14	16/18	20/22	24/26	28/30
Bust	32-34	35-36	37-38	39-41	42-44	45-47	48-51	52-55

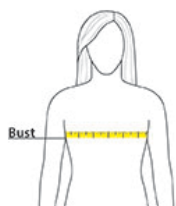
# SPEC SHEET + MEASUREMENTS

PORT AUTHORITY

Port Authority® Women's Concept Long Pocket Cardigan.  
LK5434

## HOW TO MEASURE

---



### BUST

Measure under the arm and around the fullest part of the bust with arms down, keeping tape horizontal.

## COLORS

---



Black  
PMS BLACK  
C



Grey Smoke  
PMS 426C